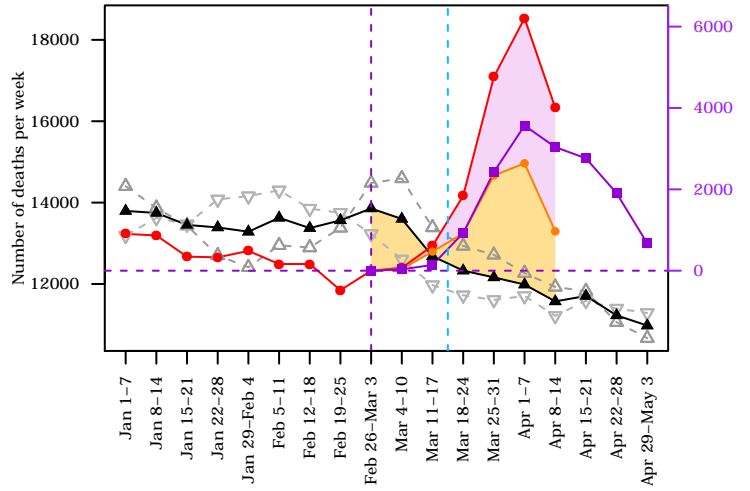


Covid-19 epidemic and mortality in France by age category

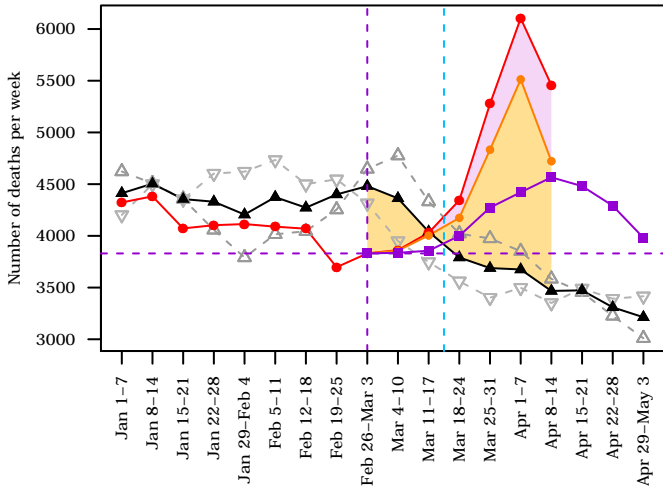
Legend

- △- Total deaths 2018
- ▽- Total deaths 2019
- ▲- Average deaths 2018 and 2019
- Total deaths 2020 (provisional)
- Total deaths 2020 without Covid-19 hospital deaths
- Covid-19 hospital deaths (right scale)
- - - Lockdown

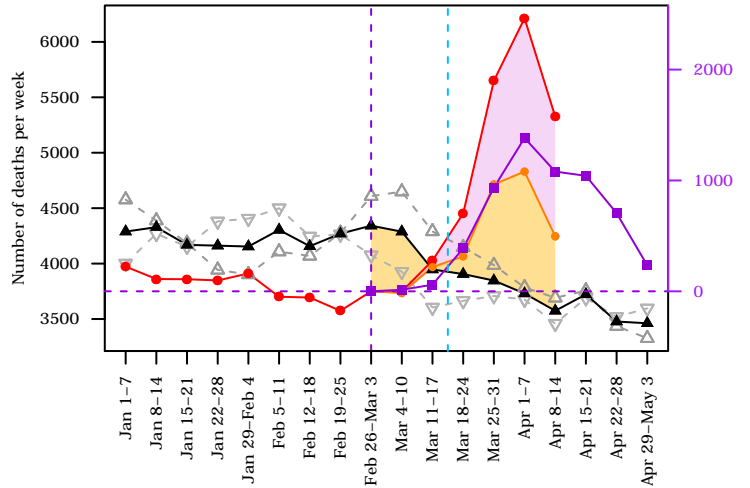
Age: all



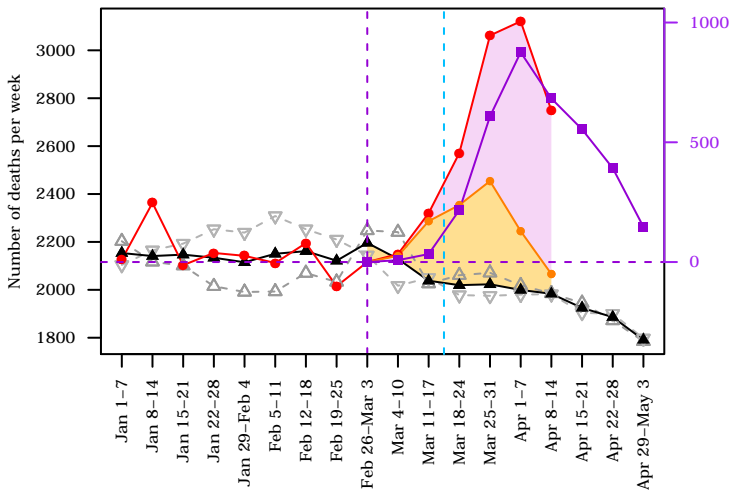
Age: 90 +



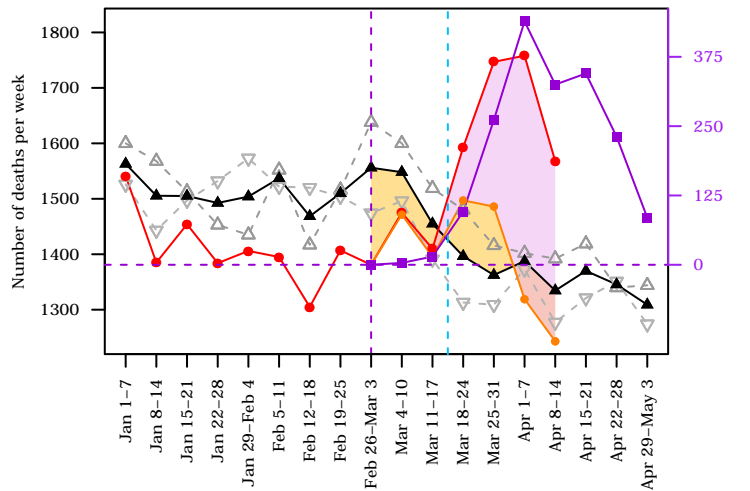
Age: 80-89



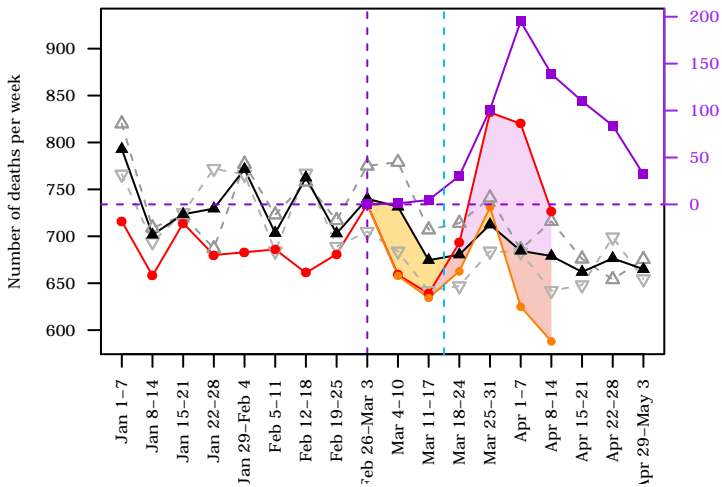
Age: 70-79



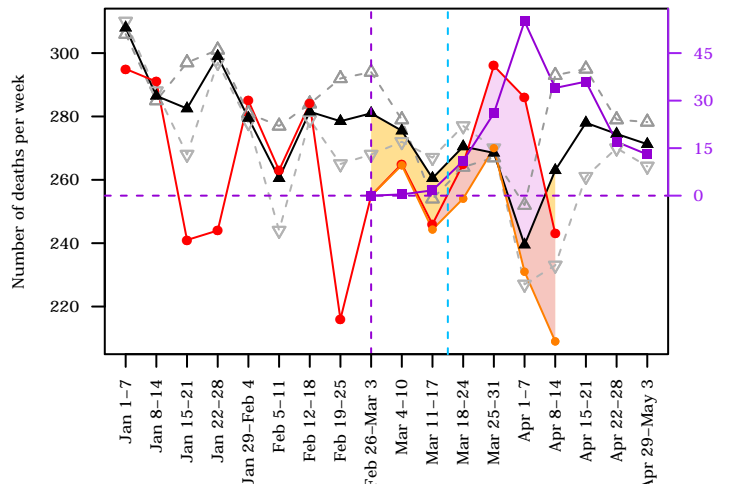
Age: 60-69



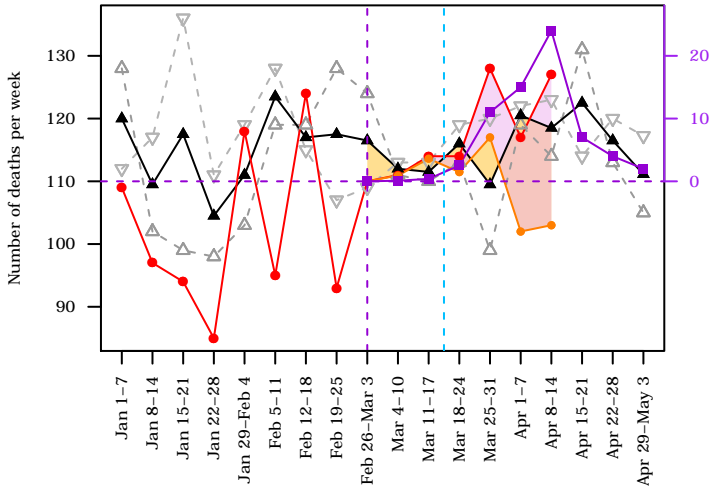
Age: 50-59



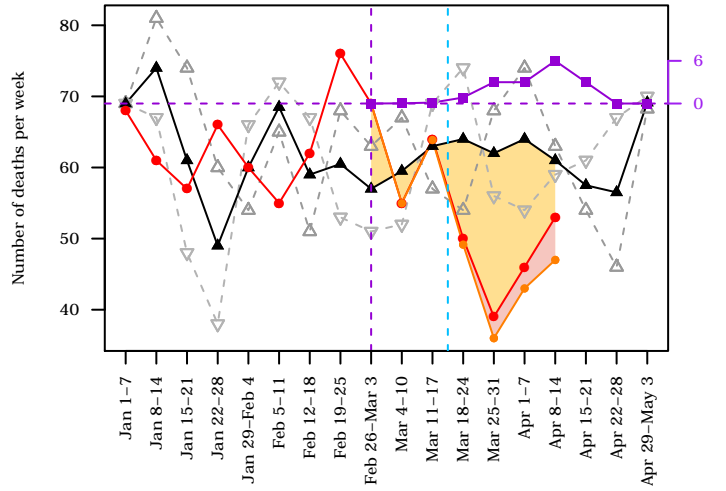
Age: 40-49



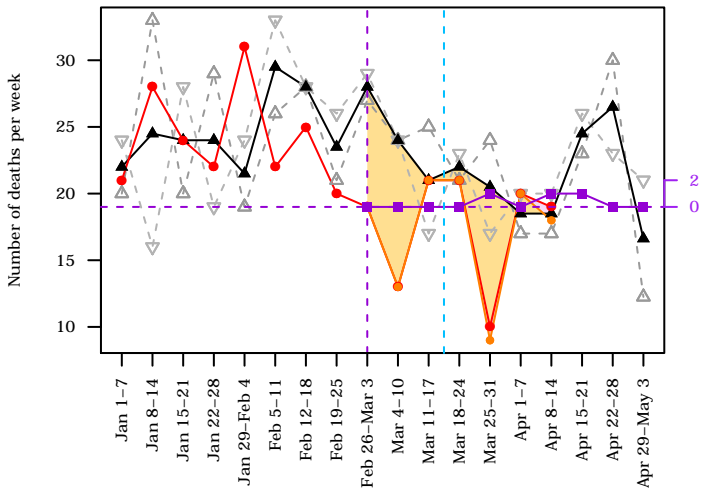
Age: 30-39



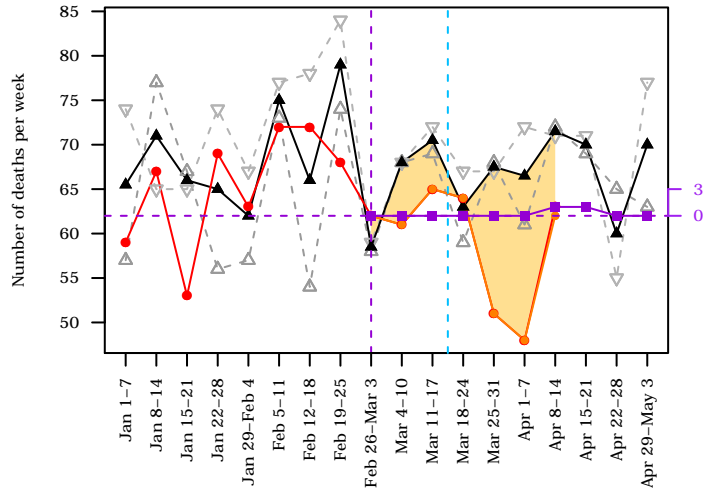
Age: 20-29



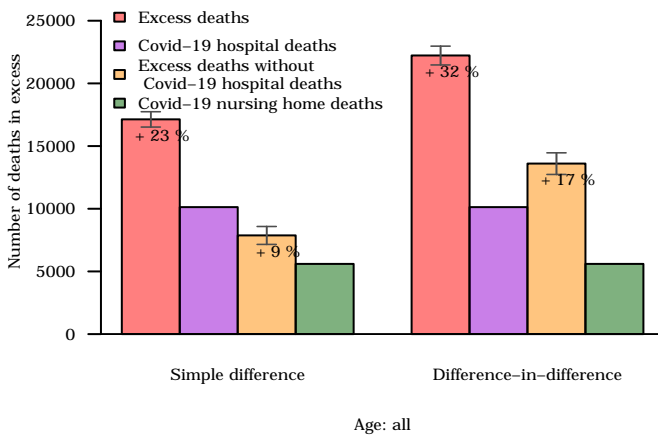
Age: 10-19



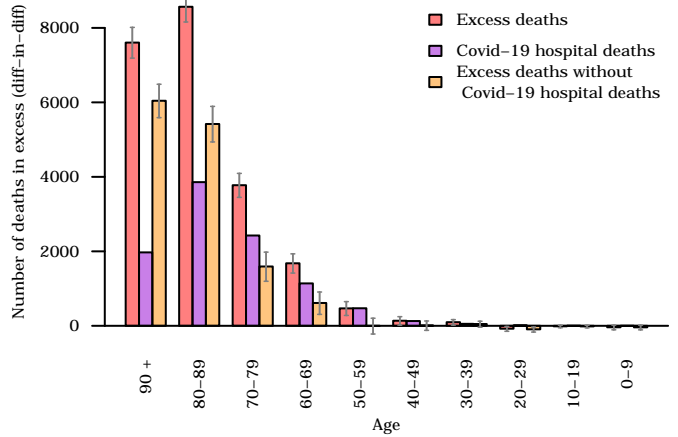
Age: 0-9



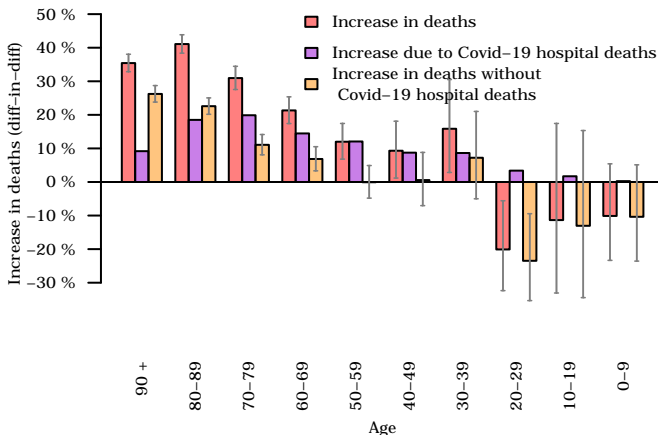
Excess deaths between March 4th and April 14th



Excess deaths between March 4th and April 14th



Increase in deaths between March 4th and April 14th



Sources

Deaths in France

Insee
<https://www.insee.fr/fr/information/4470857>
 File: Fichier individuel comportant des informations sur chaque décès

Covid deaths per age and region

Santé Public France – data.gouv.fr
<https://www.data.gouv.fr/fr/datasets/donnees-hospitalieres-relatives-a-lepidei>
 File: donnees-hospitalieres-etablissements-covid19-2020-##-##.csv

R Script

http://olivier.godehot.free.fr/hopficiers/French_Overmortality.R